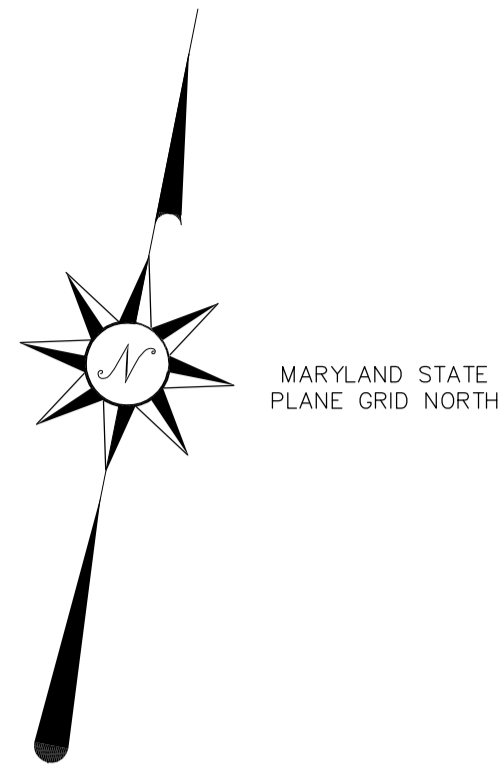
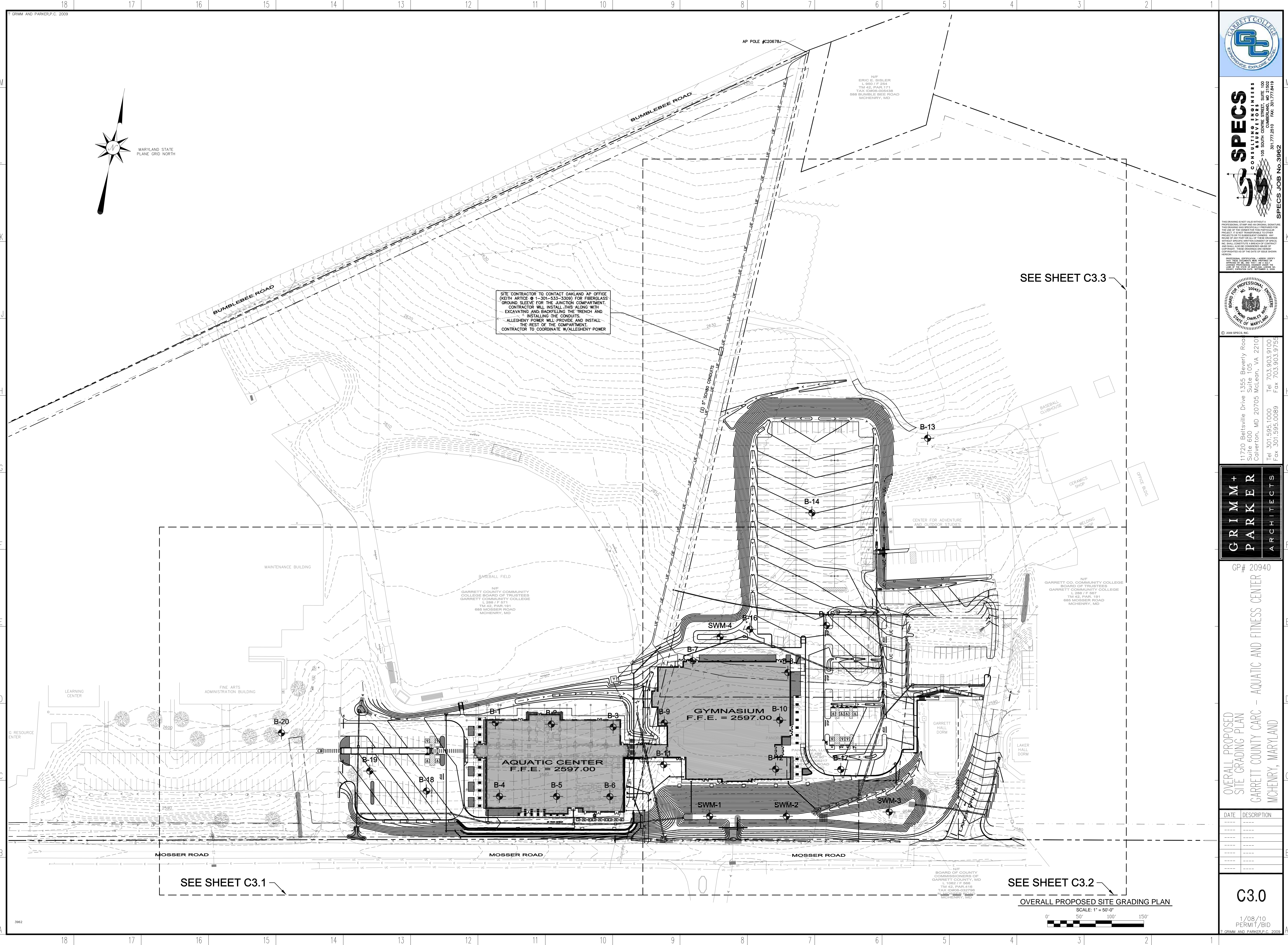


** Please note several buildings have been constructed since this map was created circa 2006 **



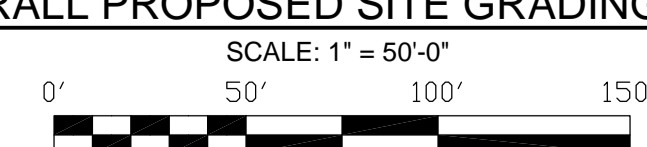
SITE CONTRACTOR TO CONTACT OAKLAND AP OFFICE (KEITH ARTICE @ 1-301-533-3309) FOR FIBERGLASS GROUND SLEEVES FOR THE JUNCTION COMPARTMENT. CONTRACTOR WILL INSTALL THIS ALONG WITH EXCAVATING AND BACKFILLING THE TRENCH AND INSTALLING THE CONDUITS. ALLEGHENY POWER WILL PROVIDE AND INSTALL THE REST OF THE COMPARTMENT. CONTRACTOR TO COORDINATE W/ALLEGHENY POWER


SEE SHEET C3.3

SEE SHEET C3.1


SEE SHEET C3.2

OVERALL PROPOSED SITE GRADING PLAN





SPECS
CONSULTING ENGINEERS
103 SOUTH CENTRE STREET, SUITE 100
CUMBERLAND, MD 21502
301.777.2510 FAX 301.777.2619
SPECS JOB NO. 3962



11770 Beltsville Drive 1355 Beverly Road
Suite 600 Suite 105
Cohasset, MD 20705 McLean, VA 22101
Tel 301.595.1000 Tel 703.903.9100
Fax 301.595.0089 Fax 703.903.9755

GRIMM + PARKER
ARCHITECTS

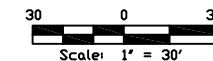
GP# 20940

OVERALL PROPOSED SITE GRADING PLAN
GARRETT COUNTY CARC - AQUATIC AND FITNESS CENTER
MCHENRY, MARYLAND

DATE	DESCRIPTION

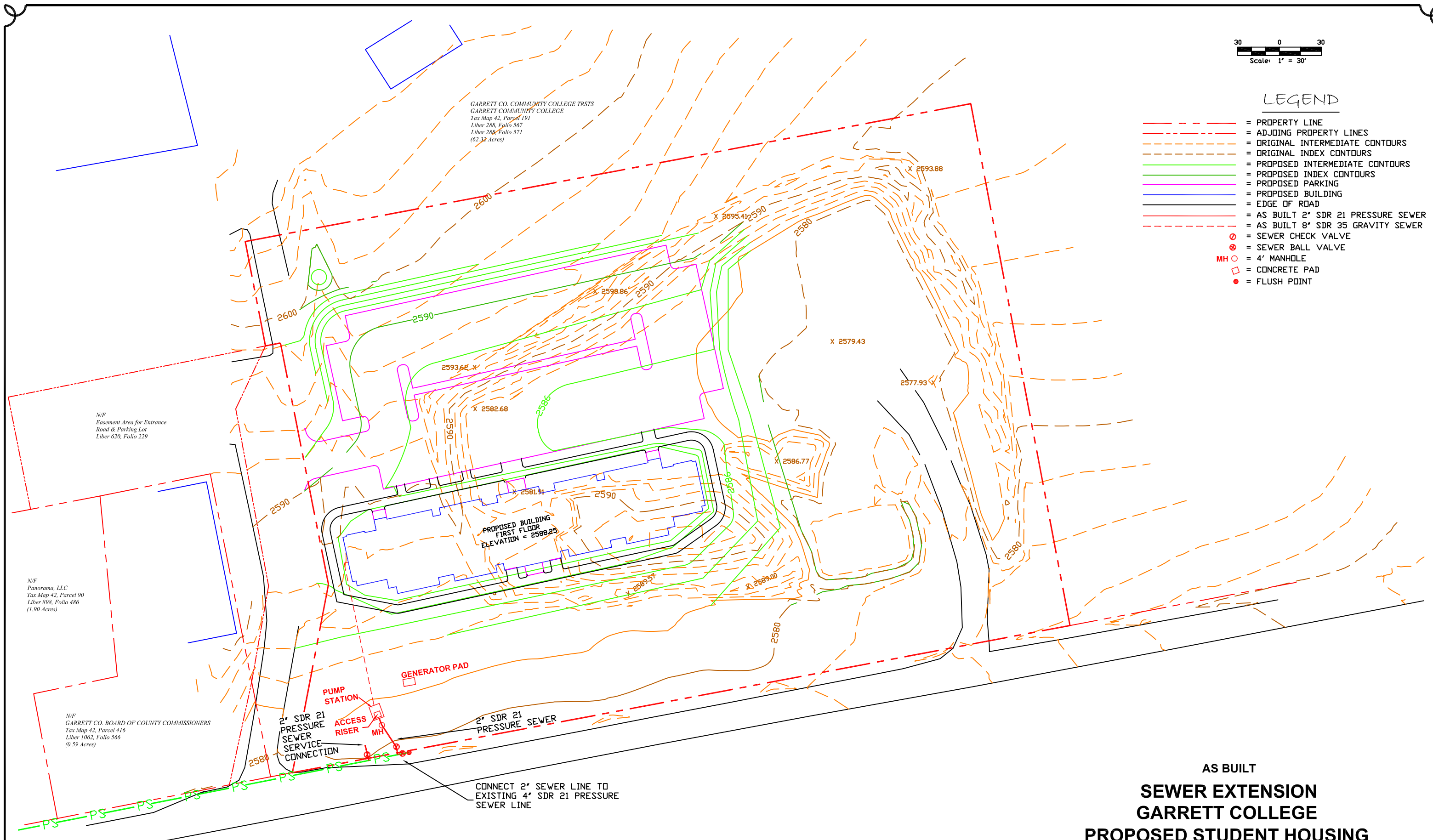
C3.0

1/08/10
PERMIT/BID
© GRIMM AND PARKER P.C. 2009



LEGEND

- = PROPERTY LINE
- = ADJOINING PROPERTY LINES
- = ORIGINAL INTERMEDIATE CONTOURS
- = ORIGINAL INDEX CONTOURS
- = PROPOSED INTERMEDIATE CONTOURS
- = PROPOSED INDEX CONTOURS
- = PROPOSED PARKING
- = PROPOSED BUILDING
- = EDGE OF ROAD
- = AS BUILT 2" SDR 21 PRESSURE SEWER
- = AS BUILT 8" SDR 35 GRAVITY SEWER
- ⊗ = SEWER CHECK VALVE
- ⊗ = SEWER BALL VALVE
- MH ⊙ = 4' MANHOLE
- = CONCRETE PAD
- = FLUSH POINT



**AS BUILT
SEWER EXTENSION
GARRETT COLLEGE
PROPOSED STUDENT HOUSING**

MOSSER ROAD
ELECTION DISTRICT No. 06, GARRETT COUNTY, MARYLAND
AUGUST 10, 2007



Project No.: 26750
Plot date: 2/25/09
File name: O:\267\50 GILBANE\PLANS\SEWER ASBUILT.DWG



Gilbane Development Company



I HEREBY CERTIFY THAT THESE DOCUMENTS WERE PREPARED OR APPROVED BY ME, AND THAT I AM A DULY LICENSED PROFESSIONAL ENGINEER UNDER THE LAWS OF THE STATE OF MARYLAND.
LICENSE NO. 31200, EXPIRATION DATE: 2/1/09